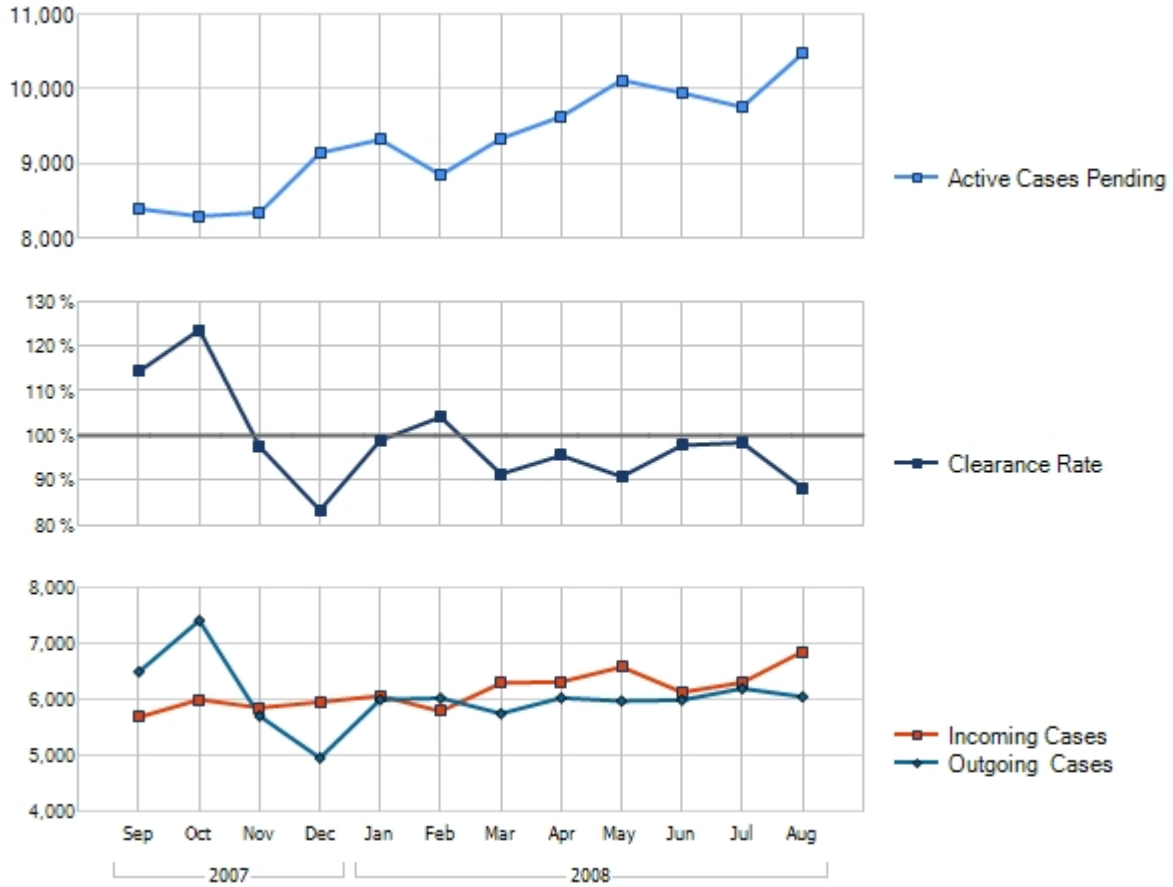


# Caseload Trend

Harris County Criminal Courts from September, 2007 through August, 2008



Year	Month	Cases Pending	Incoming	Outgoing	Clearance Rate
<b>2008</b>					
	August	10,467	6,865	6,058	88 %
	July	9,751	6,311	6,205	98 %
	June	9,939	6,137	5,999	98 %
	May	10,111	6,590	5,981	91 %
	April	9,625	6,324	6,038	95 %
	March	9,329	6,302	5,757	91 %
	February	8,841	5,797	6,033	104 %
	January	9,314	6,074	6,006	99 %
<b>2007</b>					
	December	9,137	5,963	4,965	83 %
	November	8,336	5,862	5,713	97 %
	October	8,287	6,007	7,420	124 %
	September	8,386	5,692	6,503	114 %